



iN/TRAXX[™]
Integrated Vehicle Component System

STORAGE SOLUTIONS



Original SafePaks and SafeCabs are illustrated to provide a visual reference and comparison beside the next generation iNCASE and iNCAB

iNTRAXX storage options securely attach to iNTRAXX tracks, allowing you to position them exactly where you need. Every storage solution is crash-tested to withstand forces up to 26g.

iNTRAXX offers versatile storage solutions, including instrument and supply pouches, a portable case, a modular overhead cabinet system, and multiple mounting options for secure vehicle integration.

SafePouches are individual pouches with clear flap enclosures plus a pocket for custom labels. SafePouches fit:

- Inside new iNCASE and older style SafePak bags,
- To wall tracks using Pouch Mounts, or
- Direct to vehicle walls using Pouch Mount Plates.



iNCASE is the new semi-rigid zipped bag. Its interior is lined with pouch mounts which securely hold SafePouches in position.

NEW

Contents can be accessed while the iNCASE bag is mounted to the wall, or removed for use on-scene.

iNCASE mounts to wall tracks via SafePak Multi-Mount plates.

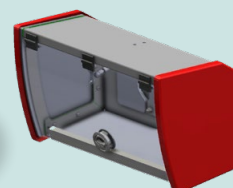


iNCAB is the revolutionary, new iNTRAXX storage cabinet which replaces the older style SafeCab.

iNCAB's modular design results in a cabinet that is both strong and lightweight, while also being expandable to suit your changing storage needs or vehicle.

iNCAB cabinets attach to iNTRAXX wall tracks

NEW



iNCASE Portable Storage 0480252

NEW



The new iNTRAXX iNCASE is a semi-rigid case designed with integrated pouch mount carriers to securely hold SafePouches inside the case. Strong yet lighter than its predecessor, the iNCASE is a streamlined upgrade from the original SafePak, which has now been retired.

Contents remain visible and easily accessible while the case is mounted on a vehicle wall, but can be quickly removed for use in the field. The iNCASE and SafePouch system is ideal for “make-ready” or swap-n-go restocking methods to efficiently resupply vehicles.

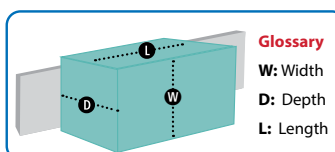
Features

- Semi-rigid casing is softer and safer in the event of a head strike during an accident
- User-friendly rubberised handles lock together for easy carrying
- Heavy-duty zip with glove-friendly pulls
- Easy to clean and decontaminate
- Supplied as requested without pre-configured pouches
- Pouches and Pouch Kits are sold separately to suit your specific needs

Quick References

- For pouch kits and individual pouches, refer to page 3
- For iNCASE mounting options to the vehicle, refer to page 6

Product Part #	0480252
Overall Size: mm / inches	(L) 455 x (W) 467 x (D) 252 mm / (L) 17.9 x (W) 18.4 x (D) 9.9 in.
Weight	4.9 kg / 10.8 lbs
Load Capacity	12 kg / 26.5 lbs
Rating	10g / 22g / 26g



Glossary

W: Width
D: Depth
L: Length



Heavy-duty zip with glove-friendly pulls



Interlocking rubberised handles for easy carrying



Configure iNCASE with your preferred SafePouch layout

SafePouch Individual Pouches

SafePouches are individualised pouches with clear flap enclosures plus a pocket for customised labels to identify each pouch or its contents if desired.

The pouches feature an innovative latching system that attaches and detaches pouches to walls and bags with one simple movement. SafePouches are available in a range of sizes and two depth options:

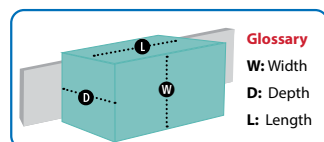
- Standard, with a depth of 70 mm (2.75 in.)
- Jumbo, with a depth of 120 mm (4.72 in.)

The **Jumbo SafePouch** offers increased capacity to accommodate bulkier items and provides more flexibility for equipment storage. Due to their larger size, Jumbo pouches can only be mounted on one side of the iNCASE. Standard SafePouches must be used on the opposite side. Pouches can be attached:

- Inside the new iNCASE or older style SafePak cases
- To INTRAXX tracks or
- Direct to the vehicle wall via a mounting plate.

Quick References

- For pouch kits, refer to page 4
- For pouch mounting options, refer to pages 7-8



The **Divider** is compatible with Medium and Large pouches, allowing you to create smaller sections or separate areas within a pouch.



Small SafePouch



Medium SafePouch



Large Vertical SafePouch



Large Horizontal SafePouch



Dual Large Vertical Jumbo SafePouch



The **Medium Mesh Pouch** allows for one-handed access to its contents, thanks to an elasticated throat. However, due to this design, items stored in the mesh pouch are not crash-test rated. Illustrated BVM not included.

Product	Part No.	Pouches per Pack	Dimensions	Weight	Load Capacity	Pouch Divider	Crash Tested
Small SafePouch	0480026	2	W: 120 mm (4.7 in) D: 70 mm (2.8 in) L: 100 mm (3.9 in)	136 g (0.3 lb)	226 g (0.5 lb)	Not compatible	10g, 22g, 26g
Medium SafePouch	0480027	2	W: 120 mm (4.7 in) D: 70 mm (2.8 in) L: 200 mm (7.9 in)	250 g (0.6 lb)	1.13 kg (2.5 lb)	Compatible	10g, 22g, 26g
Large Vertical SafePouch	0480028	2	W: 260 mm (10.2 in) D: 70 mm (2.8 in) L: 200 mm (7.9 in)	400 g (0.9 lb)	2.04 kg (4.5 lb)	Compatible	10g, 22g, 26g
Large Horizontal SafePouch	0480029	2	W: 120 mm (4.7 in) D: 70 mm (2.8 in) L: 400 mm (15.7 in)	400 g (0.9 lb)	2.04 kg (4.5 lb)	Compatible	10g, 22g, 26g
Small Jumbo SafePouch	0480173	2	W: 120 mm (4.7 in) D: 120 mm (4.7 in) L: 100 mm (3.9 in)	160 g (0.36 lb)	226 g (0.5 lb)	Not compatible	10g, 22g, 26g
Medium Jumbo SafePouch	0480174	2	W: 120 mm (4.7 in) D: 120 mm (4.7 in) L: 200 mm (7.9 in)	250 g (0.6 lb)	1.13 kg (2.5 lb)	Compatible	10g, 22g, 26g
Large Jumbo Vertical SafePouch	0480175	2	W: 260 mm (10.2 in) D: 120 mm (4.7 in) L: 200 mm (7.9 in)	470 g (1 lb)	2 kg (4.5 lb)	Compatible	10g, 22g, 26g
Large Jumbo Horizontal SafePouch	0480176	2	W: 120 mm (4.7 in) D: 120 mm (4.7 in) L: 400 mm (15.7 in)	470 g (1 lb)	2 kg (4.5 lb)	Compatible	10g, 22g, 26g
Dual Large Vertical Jumbo SafePouch	0480177	2	W: 260 mm (10.2 in) D: 120 mm (4.7 in) L: 400 mm (15.7 in)	850 g (1.8 lb)	4 kg (8.8 lb)	Compatible	10g, 22g, 26g
Medium Mesh SafePouch	0480092	2	W: 120 mm (4.7 in) D: Expands to 101 mm (4 in) L: 200 mm (7.9 in)	197 g (0.43 lb)	1.13 kg (2.5 lb)	Not compatible	N/A
SafePouch Divider	0480072	8	W: 99 mm (3.9 in) D: 64.8 mm (2.6 in) L: 40 mm (1.6 in)	100 g (0.2 lb)	N/A		N/A

SafePouch Pouch Kits

NEW

The new **Pouch Kits** are curated sets of individual pouches designed for use with the new iNCASE and older style SafePaks or for mounting on vehicle walls.

Each kit features a selection of the most popular Standard pouches, grouped into the three most commonly requested combinations. Pouch Kits also offer cost savings compared to purchasing items individually.

Quick References

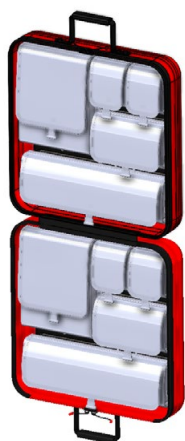
- For pouch mounting options, refer to pages 7-8



iNTRAXX Pouch Kit 1



Part No.	0480294
Product	iNTRAXX Pouch Kit 1
Kit Contents	4 x Small pouches
	2 x Medium pouches
	2 x Large Vertical pouches
	2 x Large Horizontal pouches
Total Weight	2.6 kg 5.7 lbs
Load Capacity	11.3 kg 24.9 lbs
Rating	10g, 22g, 26g



iNTRAXX Pouch Kit 2



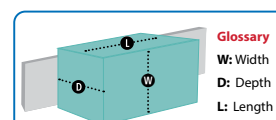
Part No.	0480295
Product	iNTRAXX Pouch Kit 2
Kit Contents	4 x Medium pouches
	2 x Large Vertical pouches
	2 x Large Horizontal pouches
Total Weight	2.6 kg 5.7 lbs
Load Capacity	12.7 kg 28 lbs
Rating	10g, 22g, 26g



iNTRAXX Pouch Kit 3

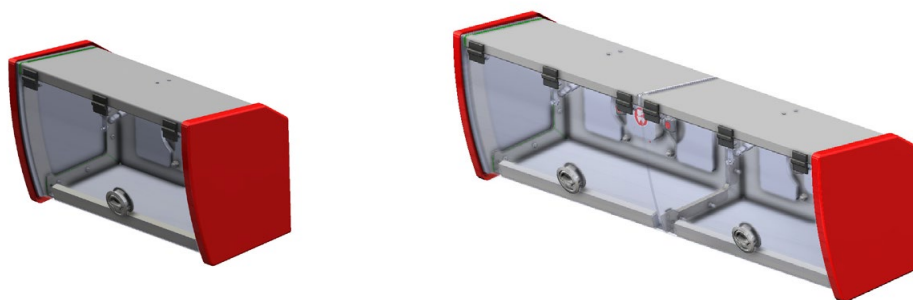


Part No.	0480296
Product	iNTRAXX Pouch Kit 3
Kit Contents	4 x Large Vertical pouches
	2 x Large Horizontal pouches
Total Weight	2.4 kg 5.3 lbs
Load Capacity	12.2 kg 26.9 lbs
Rating	10g, 22g, 26g



iNCAB Modular Cabinets

NEW



The new **iNCAB** is the latest addition to the iNTRAXX range of storage solutions. Its innovative, modular design results in a cabinet that is both strong and lightweight, while also being expandable to suit changing needs.

iNCAB attaches to the iNTRAXX track using integral mounts. Its contoured shape fits into both box and curved wall/ceiling spaces, while the clear, flip-up hinged doors allow easy visibility and access to cabinet contents from both seated and standing positions.

Features and Benefits

- Modular design allows multiple cabinets to be joined together
- Unobstructed storage space when two or more cabinets are joined
- Strong yet lightweight storage solution
- Assists in reducing overall vehicle mass
- Easy to clean and decontaminate
- 13.2 lb / 6 kg load capacity per cabinet module
- **Standard module** comes with clear door and red sides

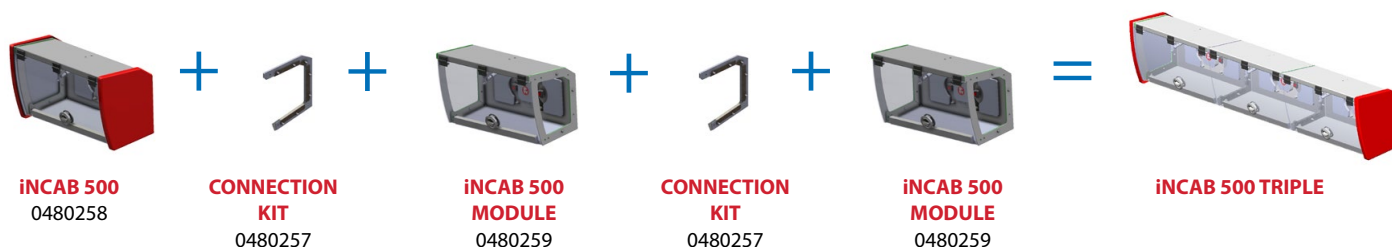
How does the iNCAB work?

To make a double cabinet:

1. Start with one iNCAB 500 (0480258) cabinet. On the joining side, remove the red side panel for later use.
2. Add an iNCAB Connection Kit (0480257) plus an iNCAB 500 Module (0480259).
3. Refit the red side panel to complete the double cabinet.



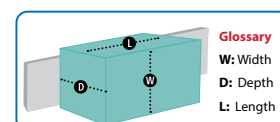
To make a triple cabinet:



iNCAB Multiple Configurations

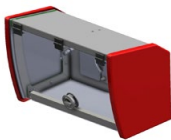
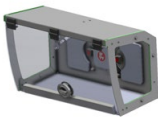

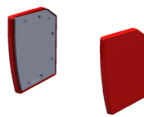
	Overall Length	Overall Width	Overall Depth	Weight	Storage Volume	Load Capacity
iNCAB 500 DOUBLE	1065 mm	325 mm	275 mm	13.95 kg	0.068 m ³	12 kg
	41.9 in	12.8 in	10.8 in	30.8 lbs	4149.6 in ³	26.4 lbs
iNCAB 500 TRIPLE	1573 mm	325 mm	275 mm	20.3 kg	0.102 m ³	18 kg
	61.9 in	12.8 in	10.8 in	44.8 lbs	6224.4 in ³	39.6 lbs

iNCAB Specifications are on the next page



iNCAB Components and Specifications



				
Part #	0480258	0480259	0480257	0480246
Description	iNCAB 500	iNCAB 500 Module	iNCAB Connection Kit	iNCAB Side Panels Kit
Overall Size	557 x 325 x 275 mm 21.9 x 12.8 x 10.8 in	501 x 325 x 275 mm 19.7 x 12.8 x 10.8 in	7 x 305 x 265 mm 0.3 x 12 x 10.4 in	56 x 325 x 275 mm 2.2 x 12.8 x 10.8 in
Storage Volume	0.034 m ³ 2074.81 in ³	0.034 m ³ 2074.81 in ³	N/A	N/A
Weight	7.6 kg 16.8 lbs	6.1 kg 13.4 lbs	0.25 kg 0.6 lbs	1.5 kg 3.3 lbs
Load Capacity	6 kg 13.2 lbs	6 kg 13.2 lbs	N/A	N/A
Rating	10G, 22G, 26G	10G, 22G, 26G	10G, 22G, 26G	10G, 22G, 26G

SECURING iNCASE AND POUCHES TO VEHICLE WALLS

iNCASE / SAFEPAK MULTI-MOUNT

The Multi-Mount provides a secure way to mount an iNCASE or SafePak in a vertical, open position on vehicle walls.

Designed as the next-generation mount for iNTRAXX cases, it replaces the original SafePak Mount with a lighter, lower-profile design and a smaller footprint—making it easier to install in more locations throughout the vehicle.

- The Multi-Mount fastens to the iNTRAXX track via a Safemount connector.
- **Available in two sizes:** the popular 2-row version and a larger 3-row version.
- Multi-Mounts are offered in **two configurations:** with a SafeMount included, or a stand-alone mount (without the SafeMount).

iNCASE / SafePak Multi-Mount 2-Row

Product Code and Description	<ul style="list-style-type: none"> • 0480201 Multi-mount - 2 Row with Safemount • 0480207 Multi-mount - 2 Row Base Plate only
Dimensions	W: 401 mm (15.8 in) D: 44 mm (1.7 in) L: 423 mm (16.7 in)
Weight	<ul style="list-style-type: none"> • 2.45 kg (5.4 lb) including Safemount connector • 1.6 kg (3.5 lb) Multi-mount 2 row plate only
Load Capacity	12 kg (26.5 lb)
Accommodates	1 Small SafePak in closed position OR 1 Regular SafePak OR 1 iNCASE in closed position If using 2 units as illustrated, all case sizes can be secured open

iNCASE / SafePak Multi-Mount 3-Row

Product Code and Description	0480193 Multi-mount - 3 Row with Safemount 0480209 Multi-mount - 3 Row Base Plate only
Dimensions	W: 601 mm (23.7 in) D: 44 mm (1.7 in) L: 423 mm (16.7 in)
Weight	<ul style="list-style-type: none"> • 3.3 kg (7.3 lb) including Safemount connector • 2.45 kg (5.4 lb) Multi-mount 3 row plate only
Load Capacity	12 kg (26.5 lb)
Accommodates	1 Small SafePak opened & secured or 2 Small in closed position OR 1 Regular SafePak OR 1 iNCASE mounted in closed position only



3-Row Multi-Mount
(front view)

Rear view with Safemount



2-Row Multi-Mount
(attached to iNTRAXX track)



POUCH MOUNT CARRIER - SINGLE

Pouch Mount Carriers are used in the SafePaks, Pouch Track Mounts and Pouch Mount Plates. They form an integral part of the latching system to secure SafePouches.



POUCH TRACK MOUNT - SINGLE

The Single Track Mount can be installed anywhere on the iNTRAXX Track. It accepts and supports:

- 2 Small or
- 1 Medium SafePouch



POUCH TRACK MOUNT - DOUBLE VERTICAL

The Double Vertical Track Mount installs direct to the iNTRAXX Track and supports:

- 2 Medium or
- 1 Large Vertical or
- 4 Small SafePouches



POUCH TRACK MOUNT - DOUBLE HORIZONTAL

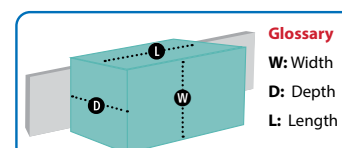
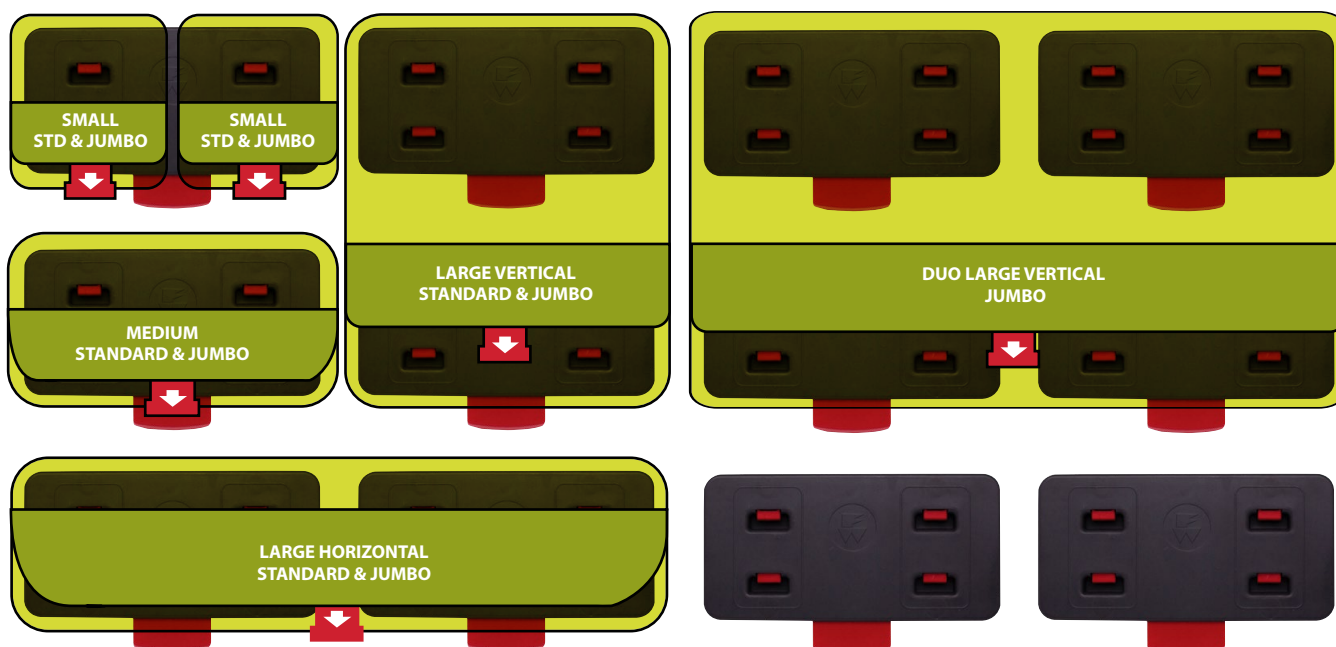
The Double Horizontal Track Mount installs direct to the iNTRAXX Track and supports:

- 2 Medium or
- 1 Large Horizontal or
- 4 Small SafePouches



Specifications	Pouch Mount Carrier	Pouch Track Mount Single	Double Vertical	Double Horizontal
Part Number	0480030	0480031	0480032	0480083
Dimensions	W: 118 mm / 4.6 in D: 15 mm / 0.6 in L: 190 mm / 7.5 in	W: 125 mm / 4.9 in D: 54 mm / 2.1 in L: 290 mm / 11.4 in	W: 268 mm / 10.6 in D: 54 mm / 2.1 in L: 290 mm / 11.4 in	W: 125 mm / 4.9 in D: 54 mm / 2.1 in L: 545 mm / 21.5 in
Weight	106 g / 0.23 lb	730 g / 1.6 lb	1.23 kg / 2.7 lb	1.14 kg / 2.5 lb
Load Capacity	2.4 kg / 5.3 lb	2.4 kg / 5.3 lb	2.4 kg / 5.3 lb	2.4 kg / 5.3 lb
Crash Tested	10g, 22g, 26g	10g, 22g, 26g	10g, 22g, 26g	10g, 22g, 26g

READY REFERENCE: SAFEPOUCH MOUNT REQUIREMENTS



Pouch Mount Plates offer an alternative way to use the iNTRAXX storage system without requiring iNTRAXX tracks. They install directly to the vehicle wall and are available in a range of sizes to suit available space and configuration preferences. Their low-profile design makes them ideal for confined spaces. They are lightweight, easy to clean, and simple to decontaminate.

POUCH MOUNT PLATE - 4T2



POUCH MOUNT PLATE - 3T2



POUCH MOUNT PLATE - 2T2



POUCH MOUNT PLATE - 1T2



Specifications	Pouch Mount Plate 4T2	Pouch Mount Plate 3T2	Pouch Mount Plate 2T2	Pouch Mount Plate 1T2
Part Number	0480160	0480155	0480161	0480162
Dimensions	W: 588 mm / 23.1 in D: 28.5 mm / 1.1 in L: 416 mm / 16.4 in	W: 453 mm / 17.8 in D: 28.5 mm / 1.1 in L: 416 mm / 16.4 in	W: 298 mm / 11.7 in D: 28.5 mm / 1.1 in L: 416 mm / 16.4 in	W: 183 mm / 7.2 in D: 28.5 mm / 1.1 in L: 416 mm / 16.4 in
Weight	2.46 kg / 5.4 lb	1.9 kg / 4.2 lb	1.25 kg / 2.8 lb	0.72 kg / 1.6 lb
Load Capacity	12.4 kg / 27.4 lb	9.3 kg / 20.6 lb	6.2 kg / 13.7 lb	3.11 kg / 7 lb
Crash Tested	10g, 22g, 26g	10g, 22g, 26g	10g, 22g, 26g	10g, 22g, 26g

TRACK ADAPTOR - POUCH MOUNT PLATE

The Track Adaptor is used if Pouch Mount Plates are going to be attached to an iNTRAXX track instead of direct to the wall.

The Track Adaptor provides additional flexibility in the choice of location and height, when configuring vehicle storage.



Part Number	0480191
Dimensions	W: 183 mm / 7.2 in D: 54 mm / 2.1 in L: 564 mm / 22.2 in
Weight	1.23 kg / 2.73 lb
Load Capacity	16 kg / 35 lb
Crash Tested	10g, 22g, 26g



The compact, modular design [of iNTRAXX] meant we could move from a Type III (box style) to a Type II (van style) vehicle because of the space savings.

Barry Hurd, Chief of Ambulance Services
Oak Valley District Hospital, USA

