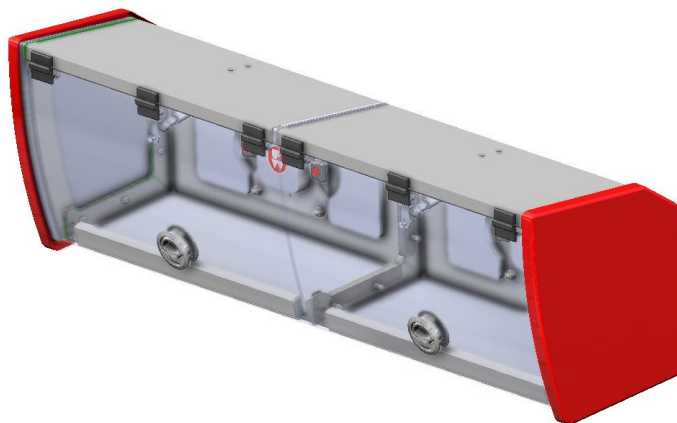
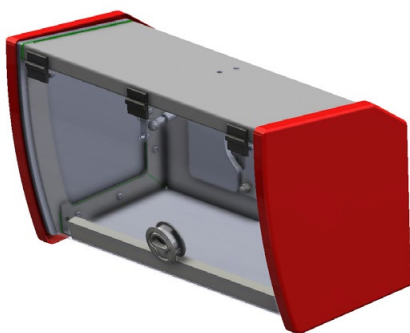




## iNCAB Modular Cabinets



The new iNCAB is the latest addition to the iNTRAXX range of storage solutions. Its innovative, modular design results in a cabinet that is both strong and lightweight, while also being expandable to suit changing needs.

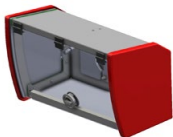
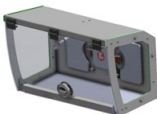

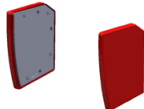
iNCAB attaches to the iNTRAXX track. Its contoured shape fits into both box and curved wall/ceiling spaces, while the clear, flip-up hinged doors allow easy visibility and access to cabinet contents from both seated and standing positions.

### Features and Benefits

- Modular design allows multiple cabinets to be joined together
- Unobstructed storage space when two or more cabinets are joined
- Strong yet lightweight storage solution
- Assists in reducing overall vehicle mass
- Easy to clean and decontaminate
- 13.2 lb / 6 kg load capacity per cabinet module
- **Standard module** comes with clear door and red sides

### iNCAB Components and Specifications



				
<b>Part #</b>	0480258	0480259	0480257	0480246
<b>Description</b>	iNCAB 500	iNCAB 500 Module	iNCAB Connection Kit	iNCAB Side Panels Kit
<b>Overall Size</b>	557 x 325 x 275 mm 21.9 x 12.8 x 10.8 in	501 x 325 x 275 mm 19.7 x 12.8 x 10.8 in	7 x 305 x 265 mm 0.3 x 12 x 10.4 in	56 x 325 x 275 mm 2.2 x 12.8 x 10.8 in
<b>Storage Volume</b>	0.034 m <sup>3</sup> 2074.81 in <sup>3</sup>	0.034 m <sup>3</sup> 2074.81 in <sup>3</sup>	N/A	N/A
<b>Weight</b>	7.6 kg 16.8 lbs	6.1 kg 13.4 lbs	0.25 kg 0.6 lbs	1.5 kg 3.3 lbs
<b>Load Capacity</b>	6 kg 13.2 lbs	6 kg 13.2 lbs	N/A	N/A
<b>Rating</b>	10G, 22G, 26G	10G, 22G, 26G	10G, 22G, 26G	10G, 22G, 26G

## How does the iNCAB work?

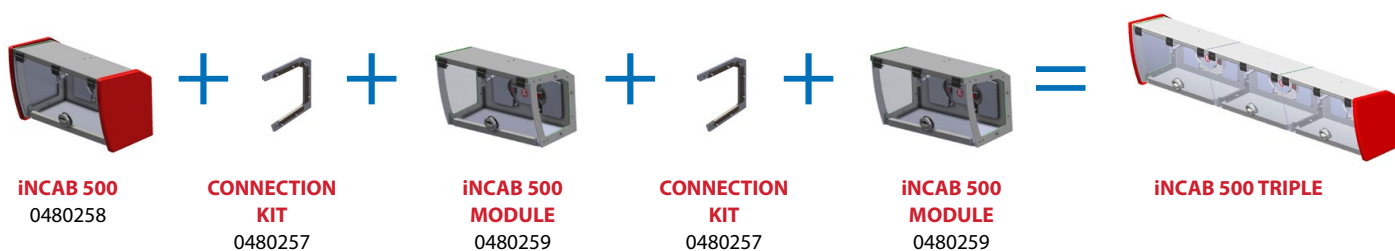
### To make a double cabinet:

1. Start with one iNCAB 500 (0480258) cabinet. On the joining side, remove the red side panel for later use.
2. Add an iNCAB Connection Kit (0480257) plus an iNCAB 500 Module (0480259).
3. Refit the red side panel to complete the double cabinet.



### To make a triple cabinet:

1. Start with one iNCAB 500 (0480258) cabinet. On the joining side, remove the red side panel for later use.
2. Add an iNCAB Connection Kit (0480257) plus an iNCAB 500 Module (0480259).
3. Add a second iNCAB Connection Kit (0480257) and iNCAB 500 Module (0480259).
4. Refit the red side panel to complete the triple cabinet.



## iNCAB Multiple Configurations

	Overall Length	Overall Width	Overall Depth	Weight	Storage Volume	Load Capacity
<b>iNCAB 500 DOUBLE</b>	1065 mm	325 mm	275 mm	13.95 kg	0.068 m <sup>3</sup>	12 kg
	41.9 in	12.8 in	10.8 in	30.8 lbs	4149.6 in <sup>3</sup>	26.4 lbs
<b>iNCAB 500 TRIPLE</b>	1573 mm	325 mm	275 mm	20.3 kg	0.102 m <sup>3</sup>	18 kg
	61.9 in	12.8 in	10.8 in	44.8 lbs	6224.4 in <sup>3</sup>	39.6 lbs

Should you have further enquiries about this product, contact the iNTRAXX Team at [INTRAXXteam@ferno.com](mailto:INTRAXXteam@ferno.com)